

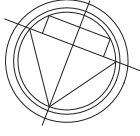
**SPRIET**<sub>nv</sub>

INVESTEER IN DE TOEKOMST

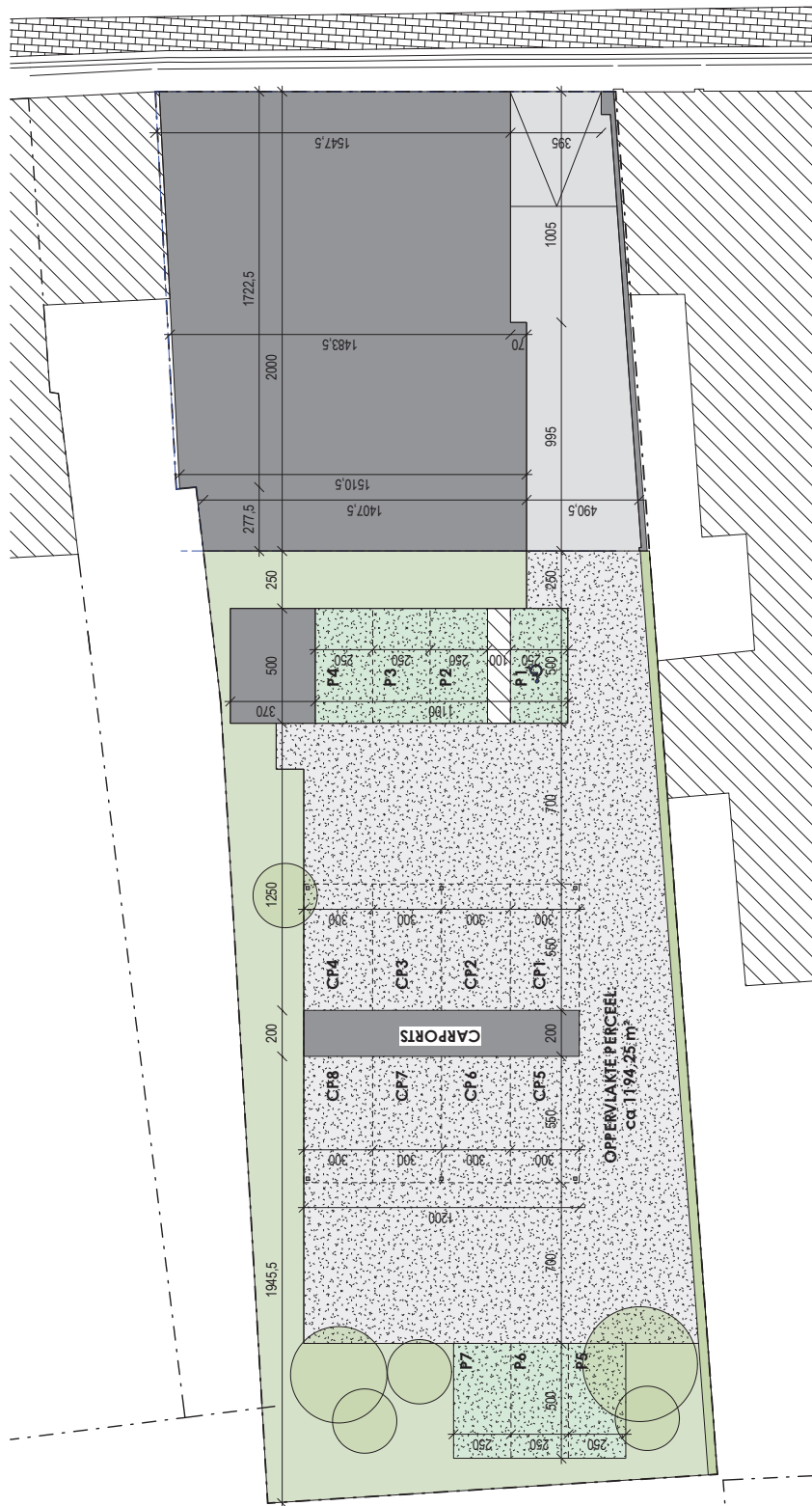


**Residentie  
De Waterpoort**  
IEPER

**INVESTEER IN DE TOEKOMST !** SPRIET NV RUMBEEKSESTRAAT 47, 8870 IZEGEM



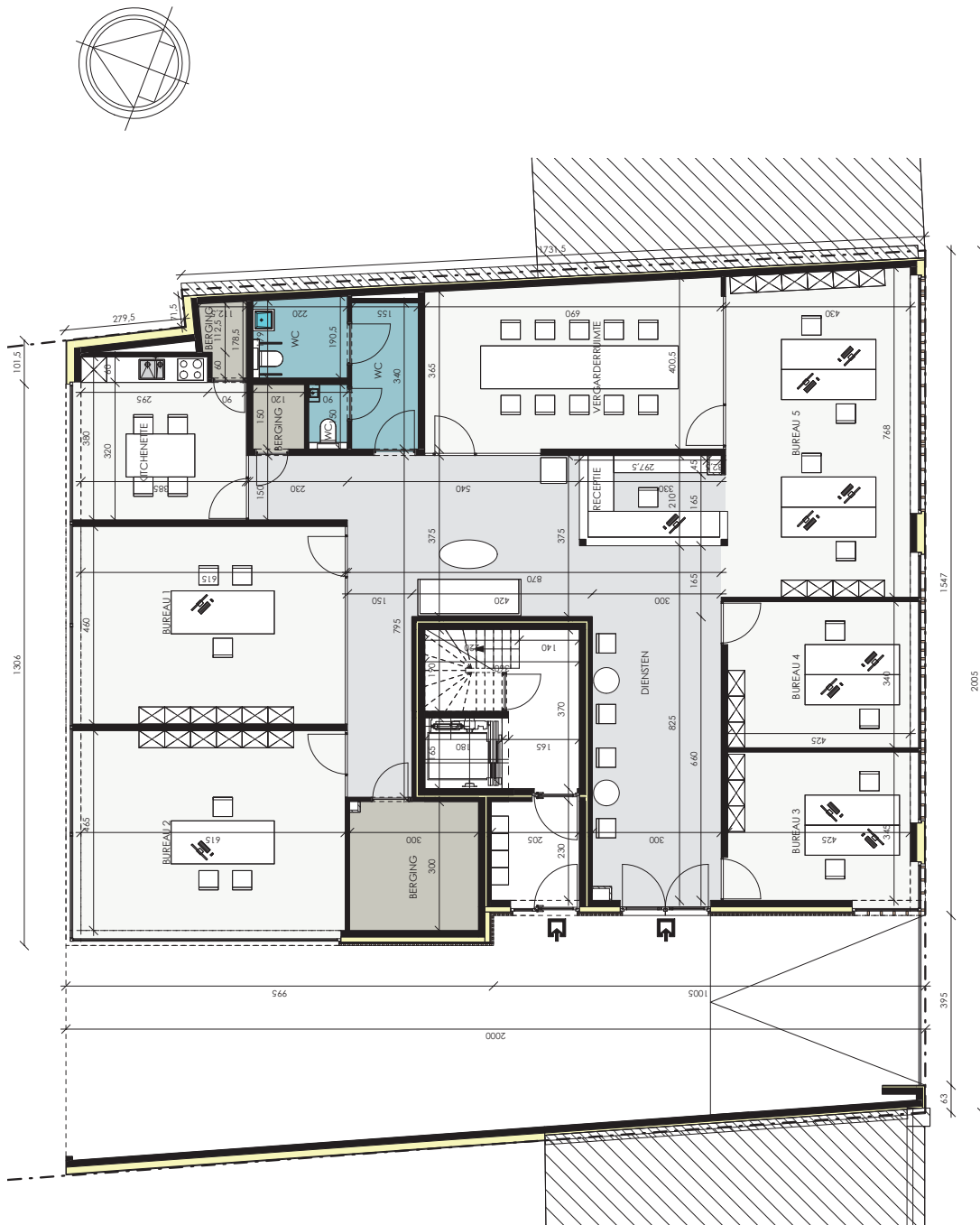
BRUGSEWEG



**SCHAALBALK**  
0 1 2 3 4 5m

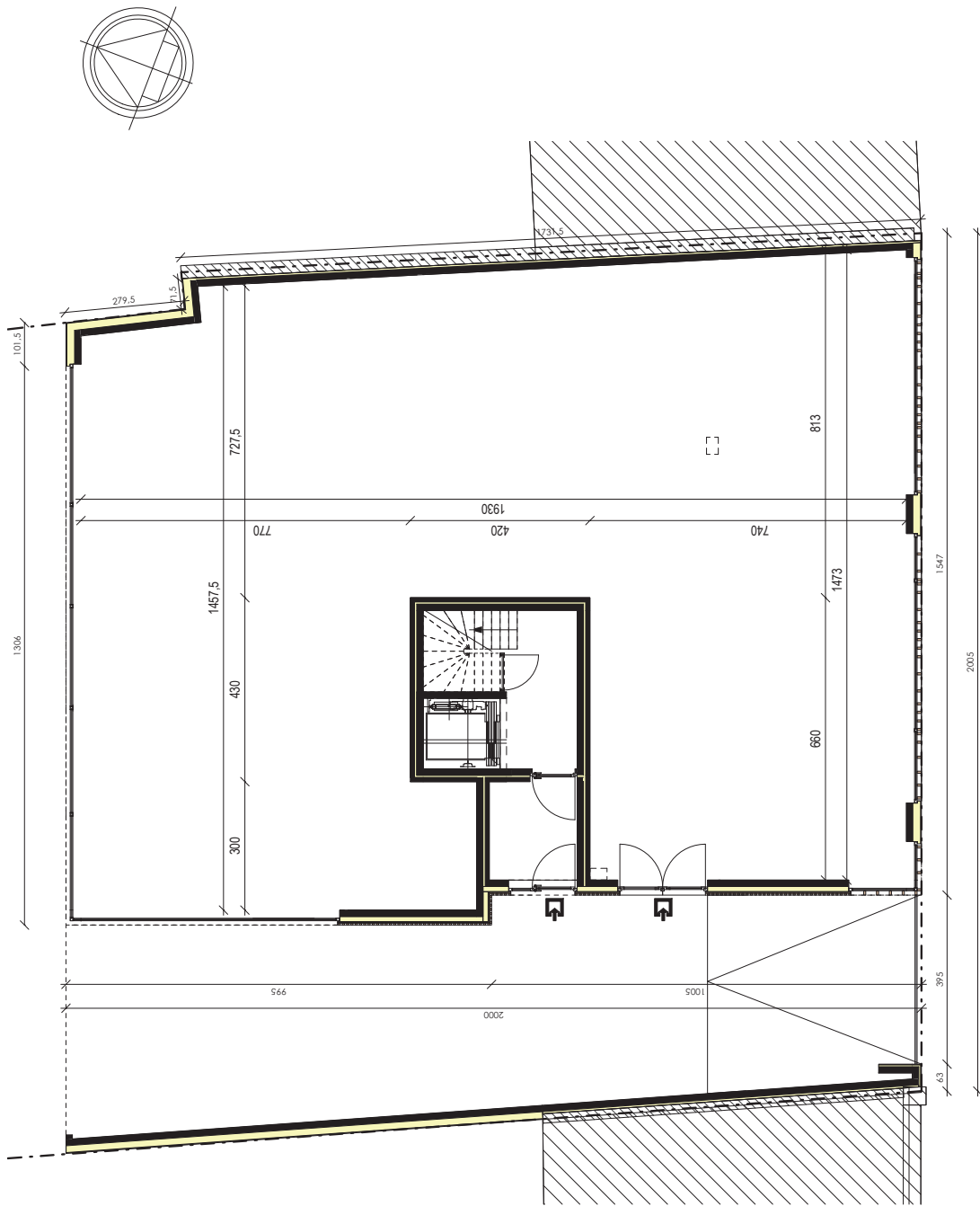
DATUM: 04/12/2020

**INPLANTINGSPLAN**



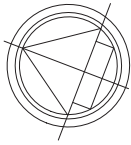
BRUTO COMMERCIEEL OPP.: 278,1 m<sup>2</sup>  
 DATUM: 04/12/2020

**GELIJKVLOERS**



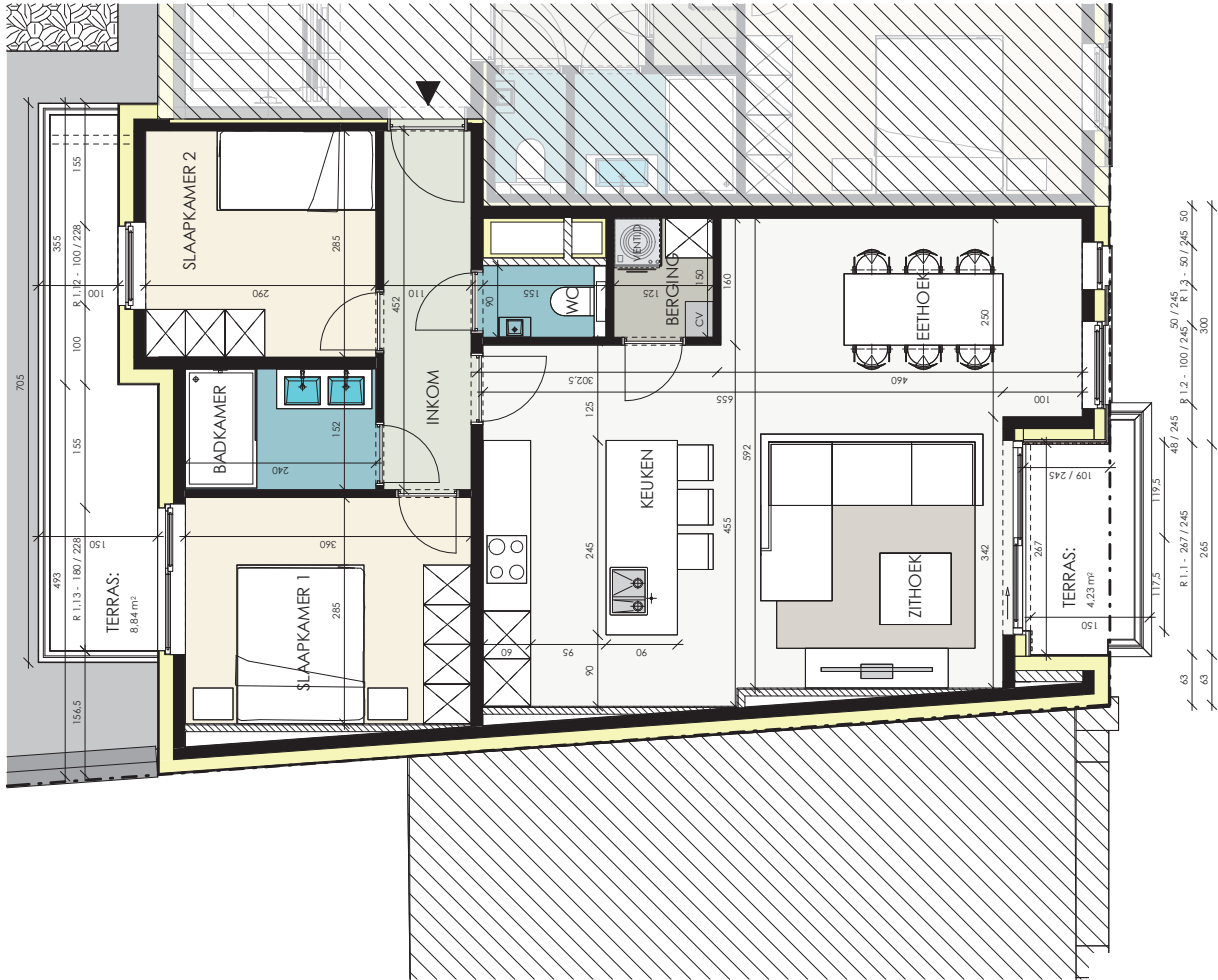
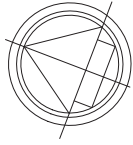
BRUTO COMMERCIEEL OPP.: 278,1 m<sup>2</sup>  
DATUM: 04/12/2020

**GELIJKVLOERS AREA**



DATUM: 04/12/2020

**1E VERDIEPING**

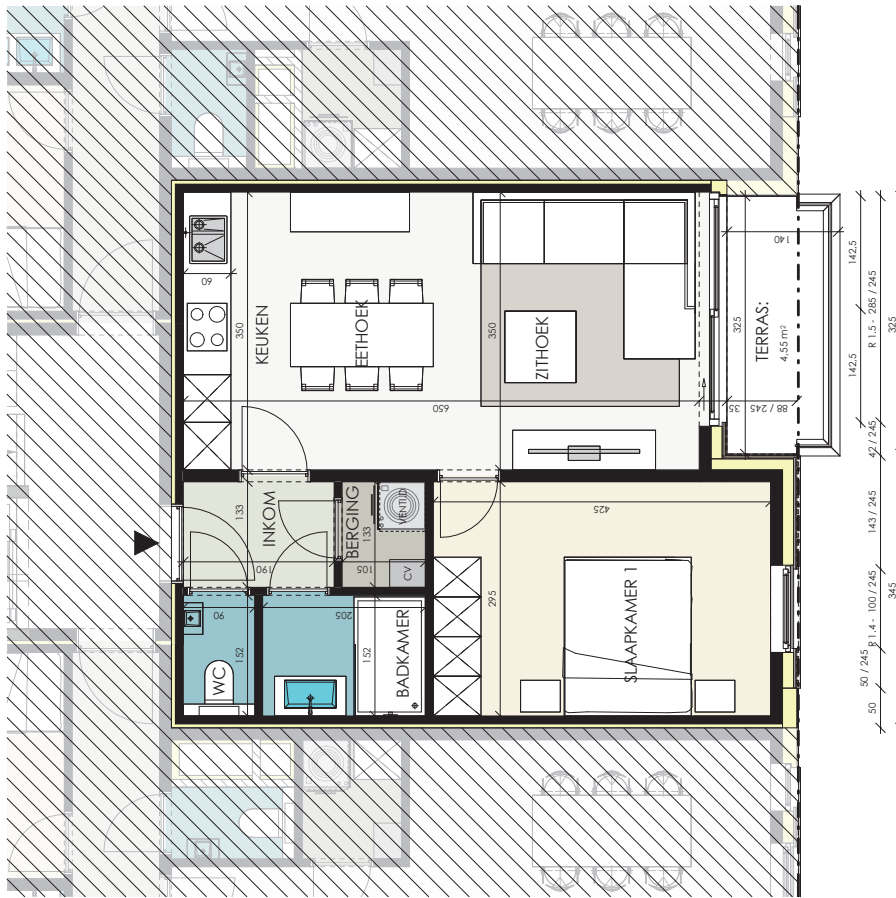
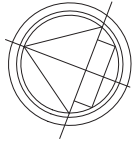


**SCHAALBALK**



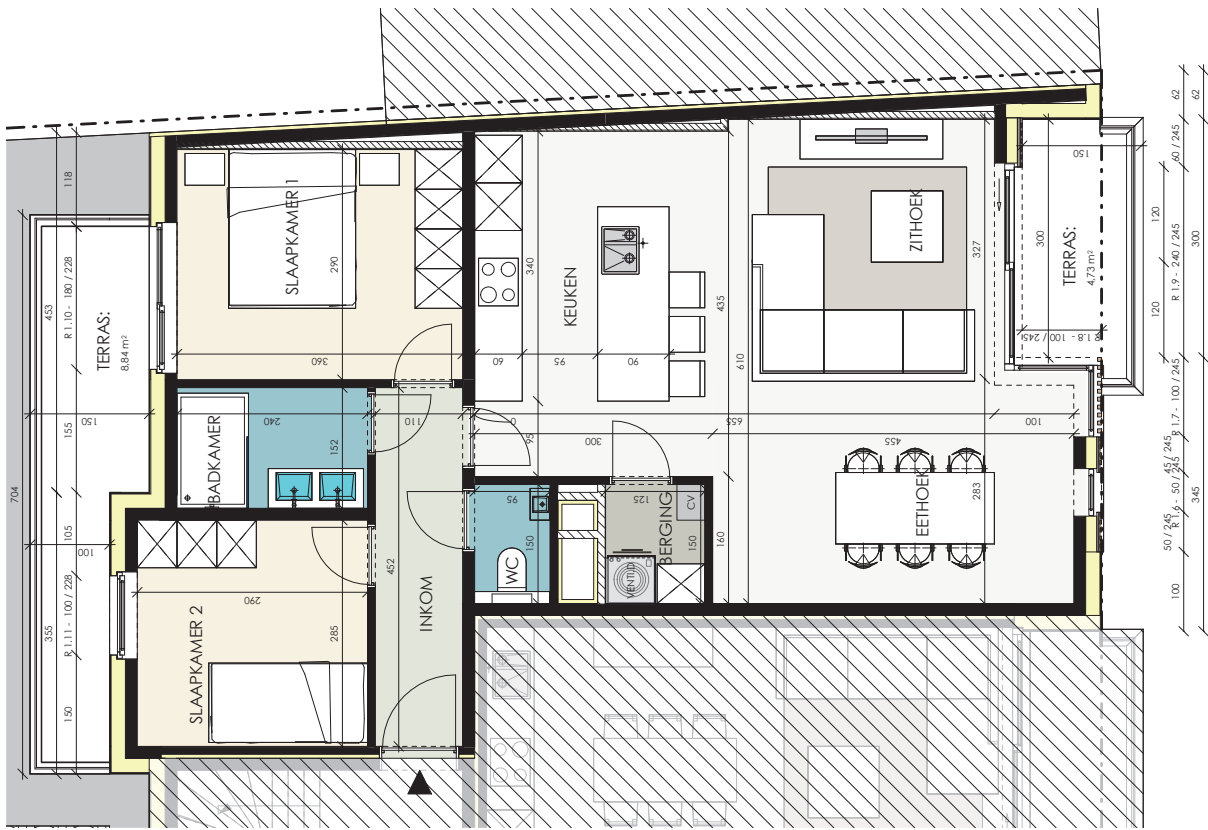
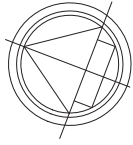
APP.1.1 - BRUGSEWEG 43 1B  
 APP. OPP.: 83,71 m<sup>2</sup> TERRAS OPP.: 13,07 m<sup>2</sup>  
 DATUM: 04/12/2020

**APPARTEMENT 1-1**



APP.1.2 - BRUGSEWEG 43 1C  
 APP. OPP.: 51,40 m<sup>2</sup> TERRAS OPP.: 4,55 m<sup>2</sup>  
 DATUM: 04/12/2020

**APPARTEMENT 1-2**



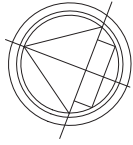
**SCHAALBALK**



APP.1.3 - BRUGSEWEG 43 1A  
 APP. OPP.: 82,87 m<sup>2</sup> TERRAS OPP.: 13,57 m<sup>2</sup>  
 DATUM: 04/12/2020

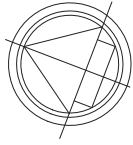
**APPARTEMENT 1-3**





DATUM: 04/12/2020

**2E VERDIEPING**

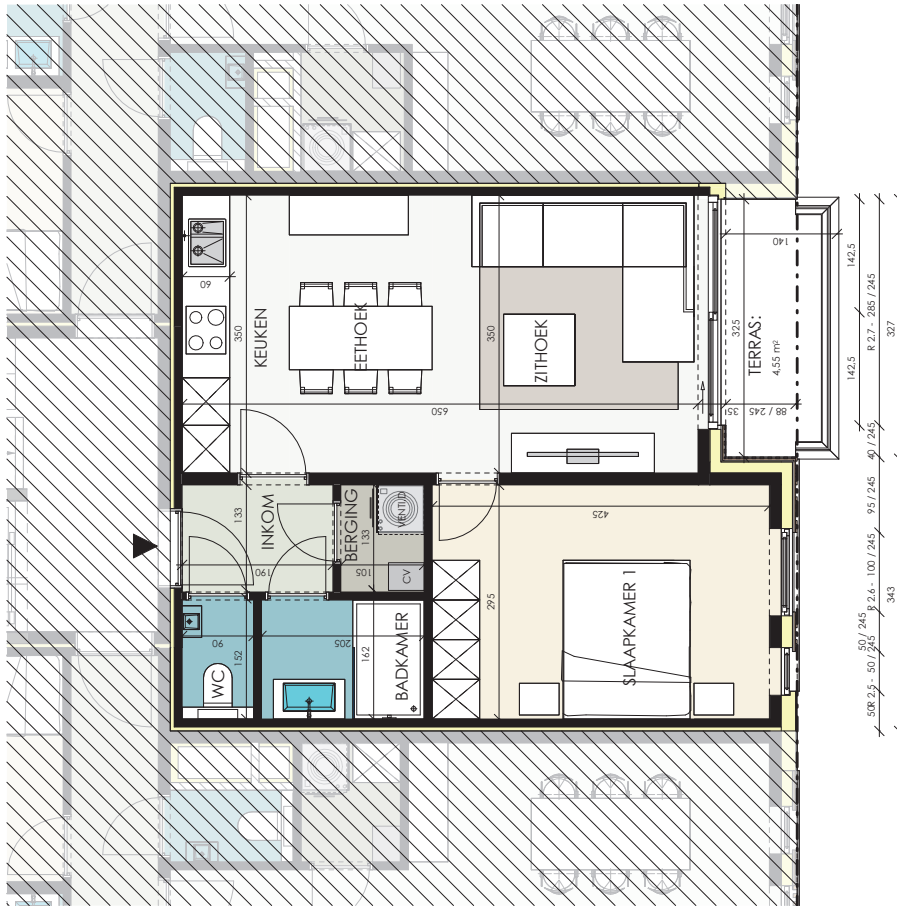
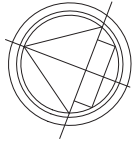


**SCHAALBALK**



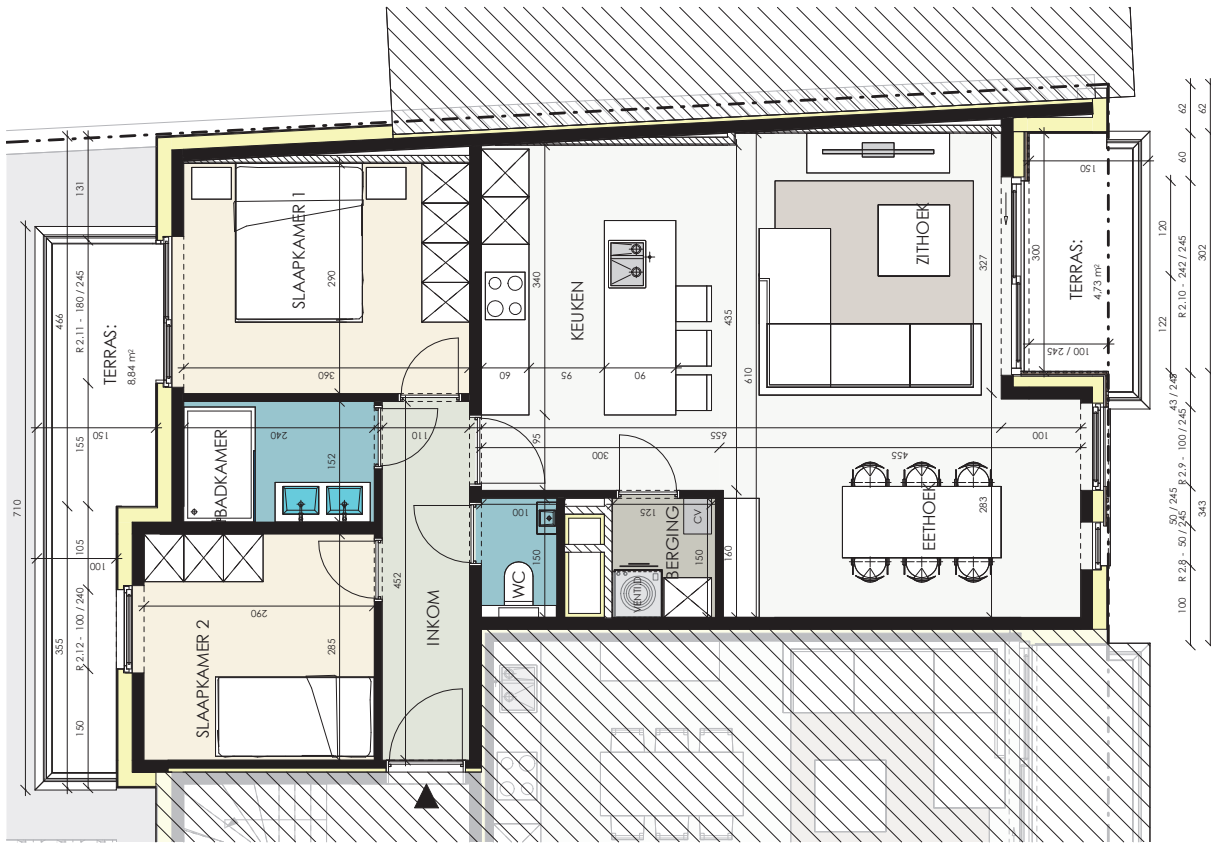
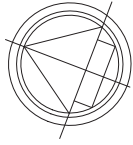
APP.2.1 - BRUGSEWEG 43 2B  
 APP. OPP.: 83,71 m<sup>2</sup> TERRAS OPP.: 13,07 m<sup>2</sup>  
 DATUM: 04/12/2020

**APPARTEMENT 2-1**



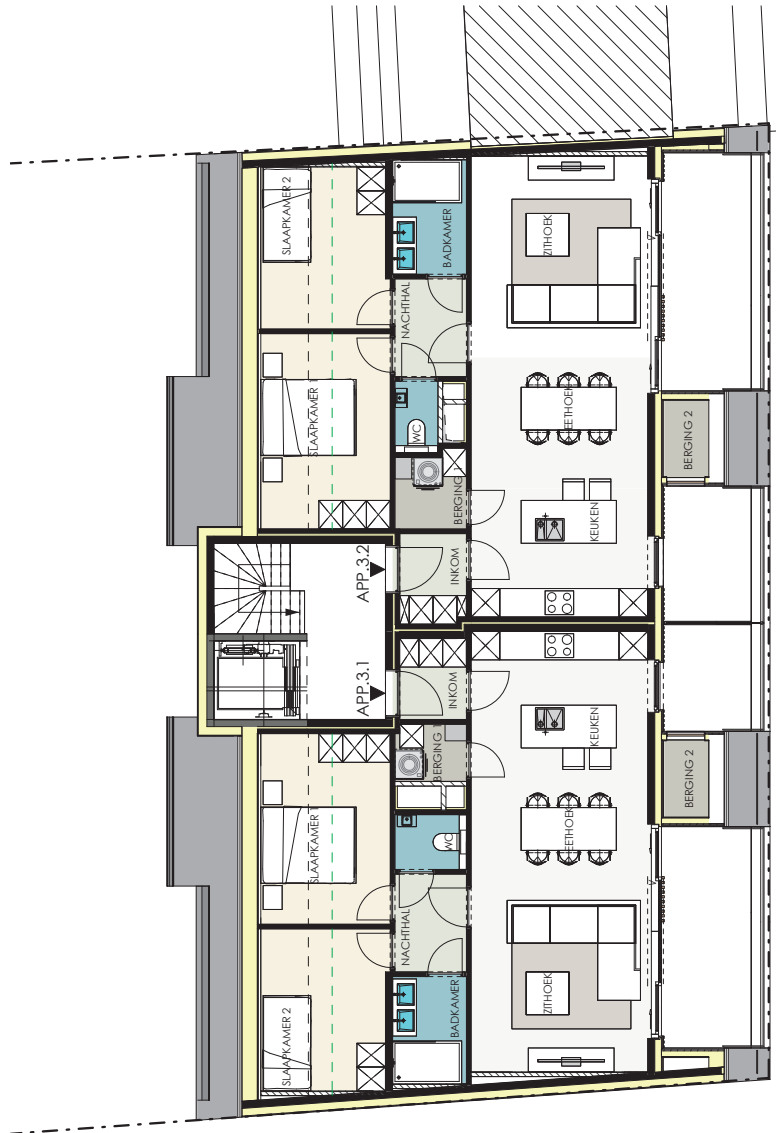
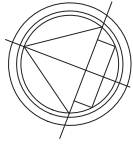
APP.2.2 - BRUGSEWEG 43 2C  
 APP. OPP.: 51,40 m² TERRAS OPP.: 4,55 m²  
 DATUM: 04/12/2020

**APPARTEMENT 2-2**



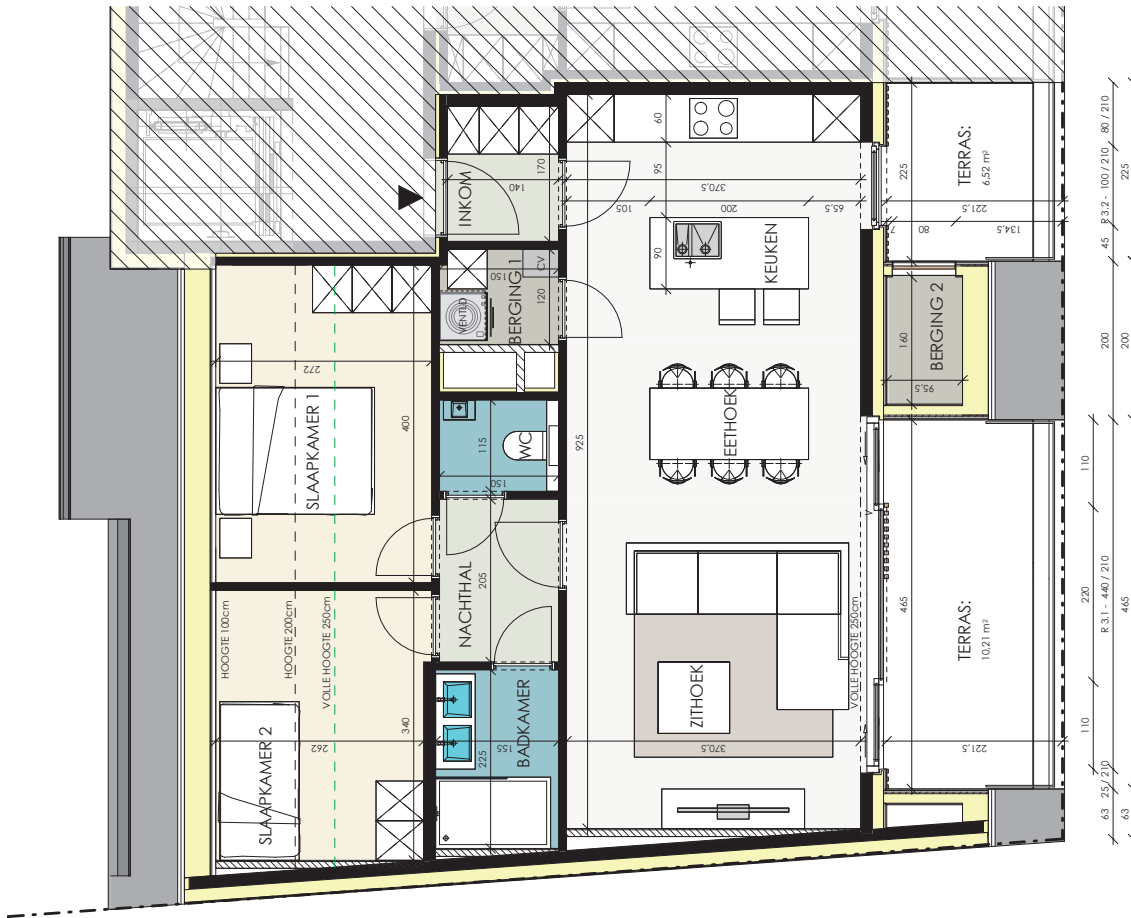
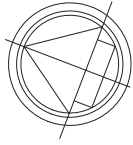
APP.2.3 - BRUGSEWEG 43 2A  
 APP. OPP.: 82,87 m<sup>2</sup> TERRAS OPP.: 13,57 m<sup>2</sup>  
 DATUM: 04/12/2020

**APPARTEMENT 2-3**



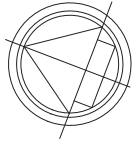
DATUM: 04/12/2020

3E VERDIEPING



APP.3.1 - BRUGSEWEG 43 3B  
 APP. OPP.: 80,60 m<sup>2</sup> TERRAS OPP.: 16,73 m<sup>2</sup>  
 DATUM: 04/12/2020

**APPARTEMENT 3-1**



APP.3.2 - BRUGSEWEG 43 3A  
 APP. OPP.: 82,44 m<sup>2</sup> TERRAS OPP.: 18,81 m<sup>2</sup>  
 DATUM: 04/12/2020

**APPARTEMENT 3-2**

**SPRIET**<sup>nv</sup>

Maatschappelijke zetel:

**SPRIET nv**

Rumbeeksestraat 47, 8870 Izegem

tel 051 30 35 14 | fax 051 31 51 56

Christophe Spriet 0495 27 27 61